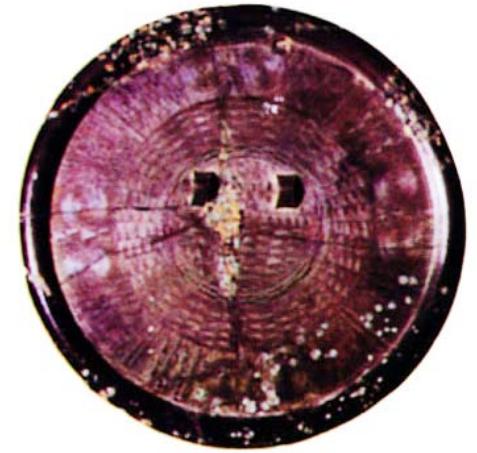


Brief Description on DONGJAK-GU



Symbols of Dongjak

THE EMBLEM OF DONGJAK-GU Emblem

The emblem symbolizes all the Dongjak-gu's people oaring into the sky in unity with the harmony of the sky and the land.



THE CHARACTER OF DONGJAK-GU Character

"ROYA", the baby snowy heron is the character of Dongjak-gu.



THE FLOWER OF DONGJAK-GU Chrysanthemum

Chrysanthemum symbolizes the refinement and benevolence.



THE BIRD OF DONGJAK-GU Bird-Snowy Heron

Snowy Heron symbolizes the clean, beautiful and noble spirit of our people.



THE TREE OF DONGJAK-GU Tree-Pine Tree

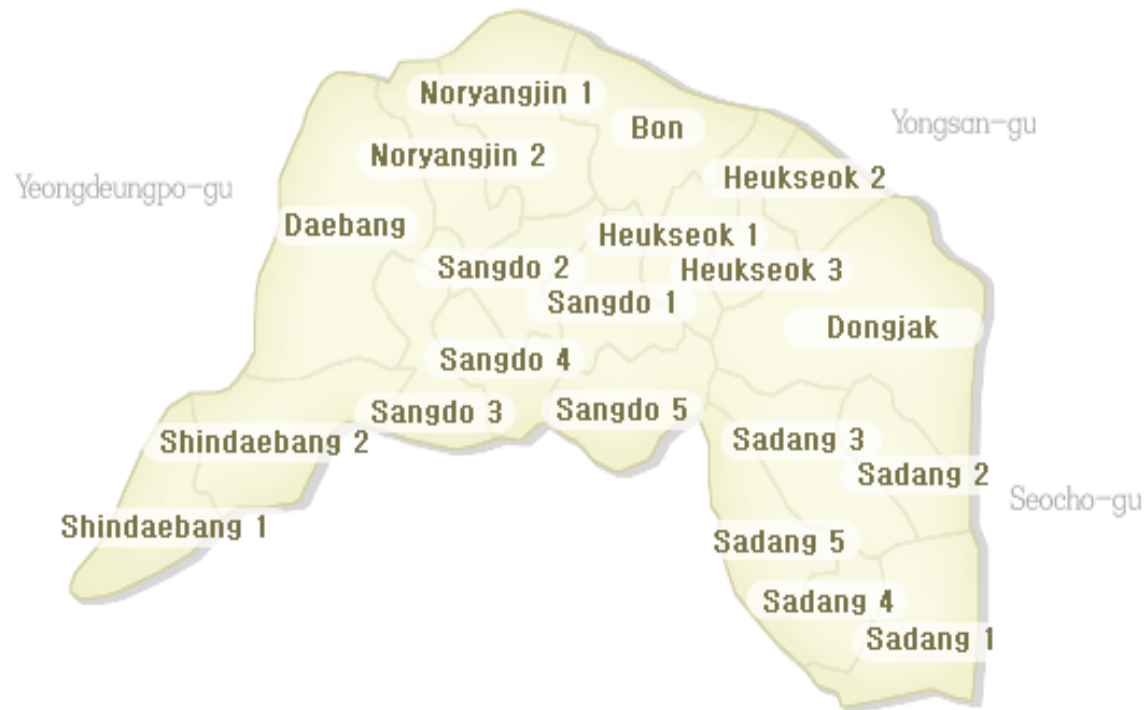
Evergreen pine represents the image of Dongjak-gu as the home of loyalty and filial piety.



Background about Dongjak-District

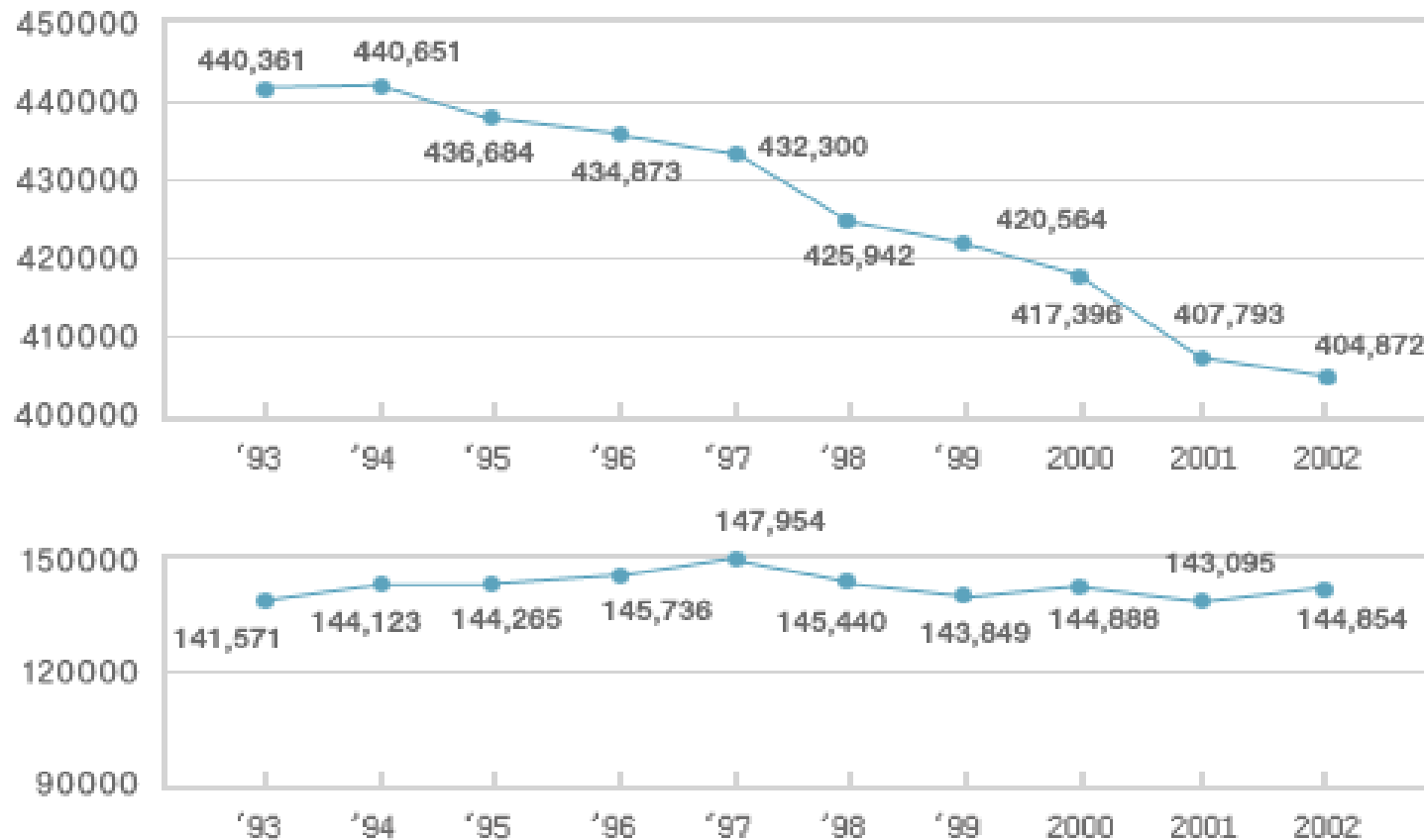


Administrative district / Area



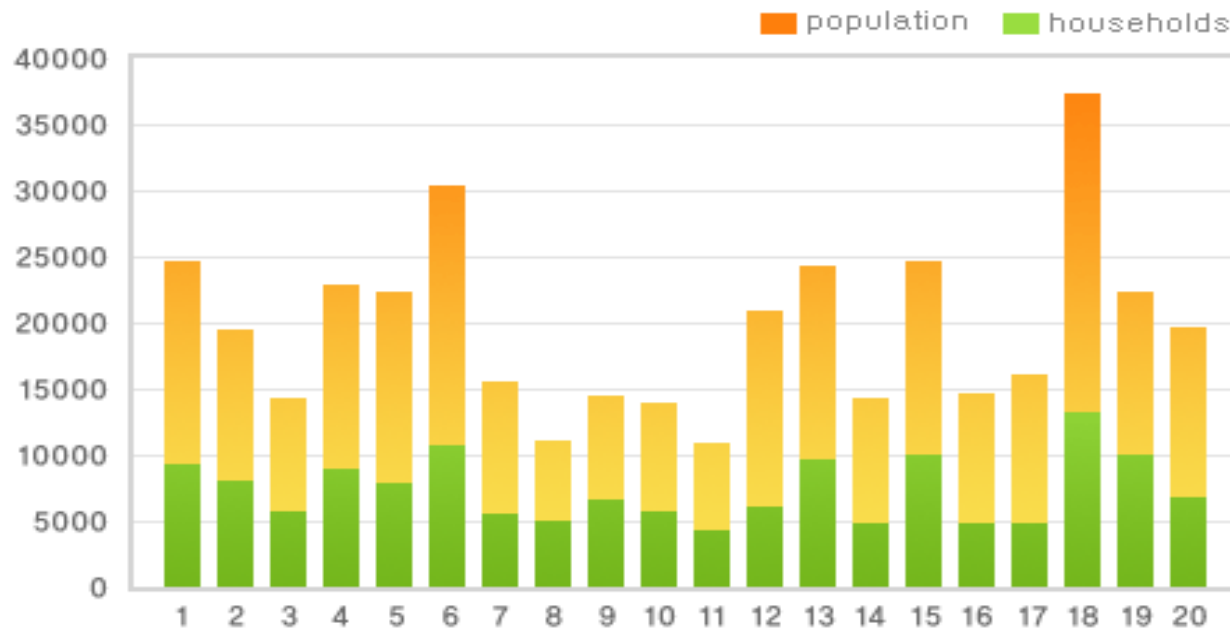
TREND OF POPULATION AND HOUSEHOLD

- Unit: persons, 2005



POPULATION AND HOUSEHOLD BY DONG

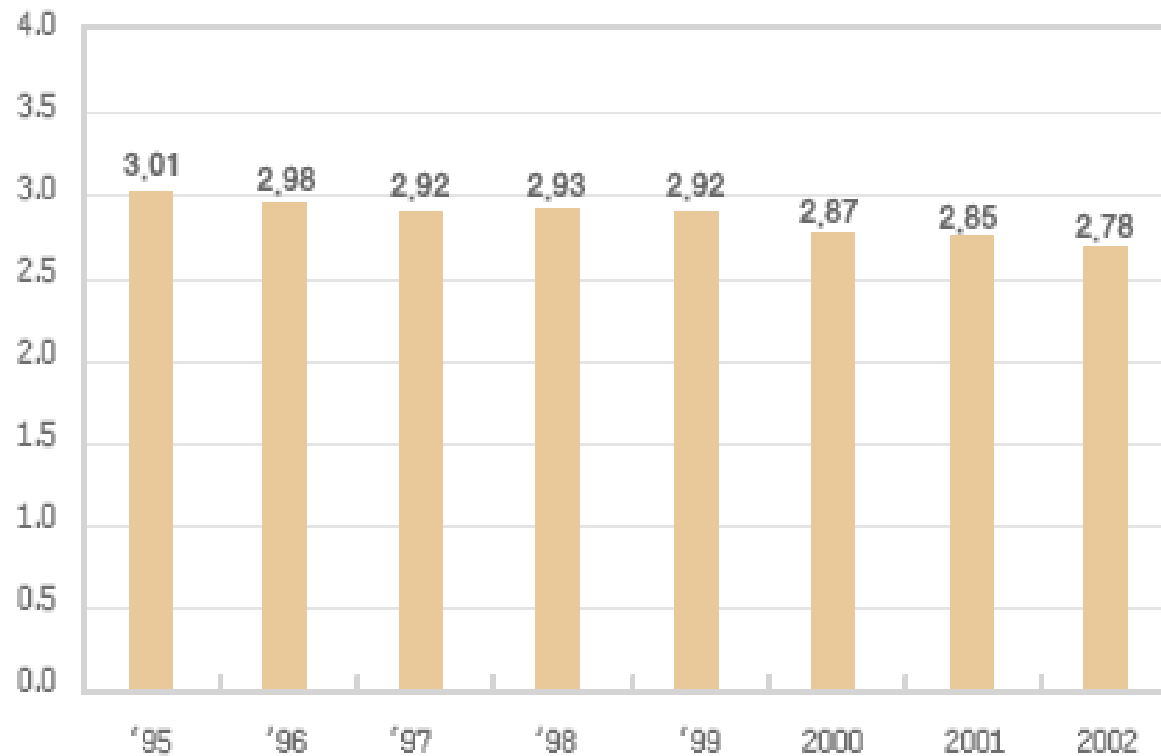
- Unit:persons, 2005



1 Noryangjin 1	5 Sangdo 3	9 Heukseok 1	13 Sadang 1	17 Sadang 5
2 Noryangjin 2	6 Sangdo 4	10 Heukseok 2	14 Sadang 2	18 Daebang
3 Sangdo 1	7 Sangdo 5	11 Heukseok 3	15 Sadang 3	19 Shindaebang 1
4 Sangdo 2	8 Bon	12 Dongjak	16 Sadang 4	20 Shindaebang 2

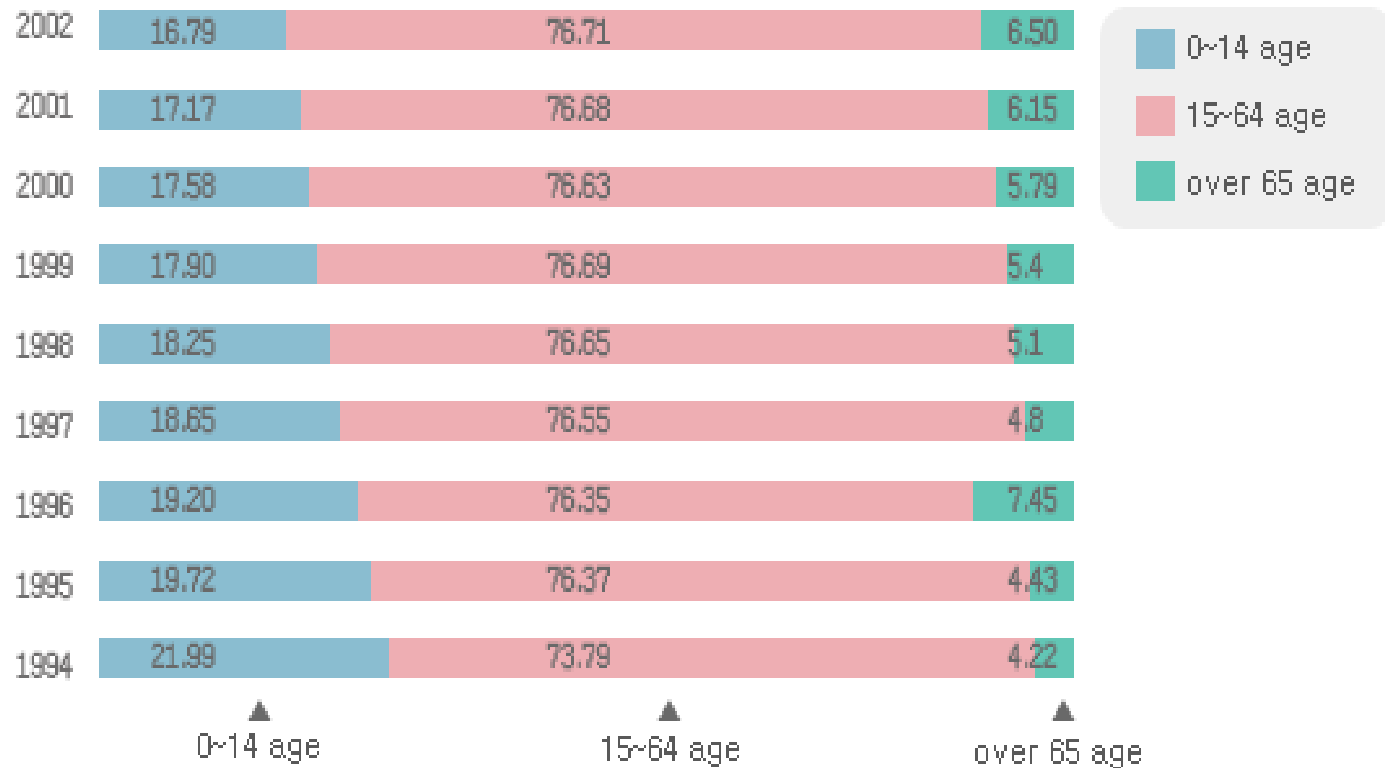
AVERAGE POPULATION OF HOUSEHOLD

- Unit: persons, 2005

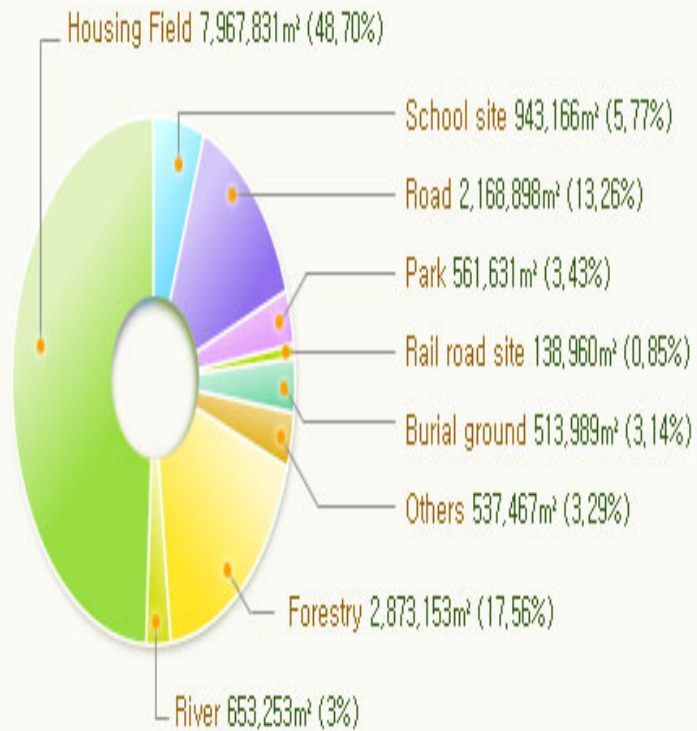


TRANSITION OF POPULATION STRUCTURE

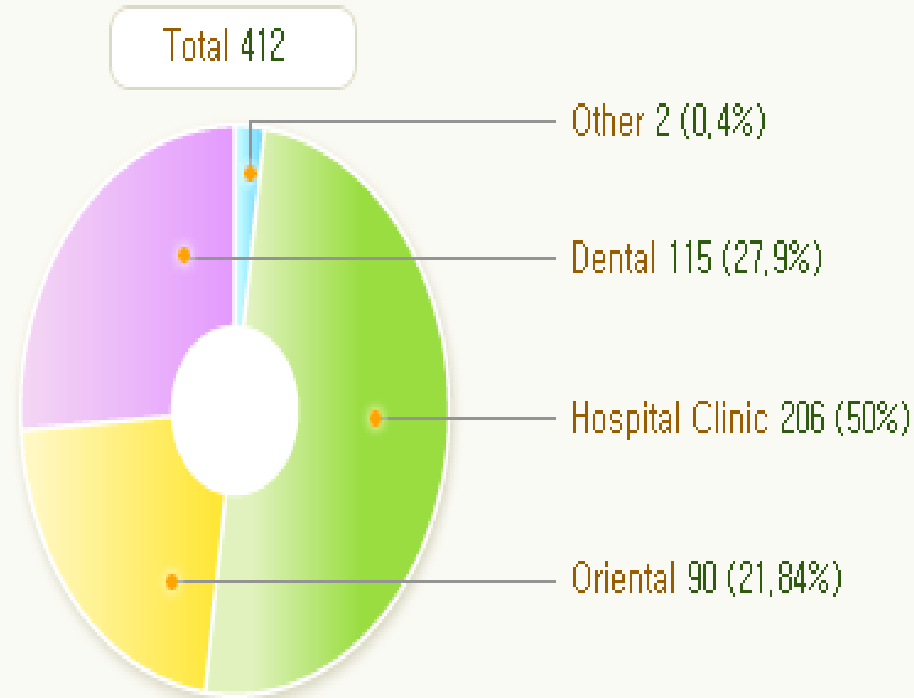
- Unit: %, 2005



Land & Forest Land 2005

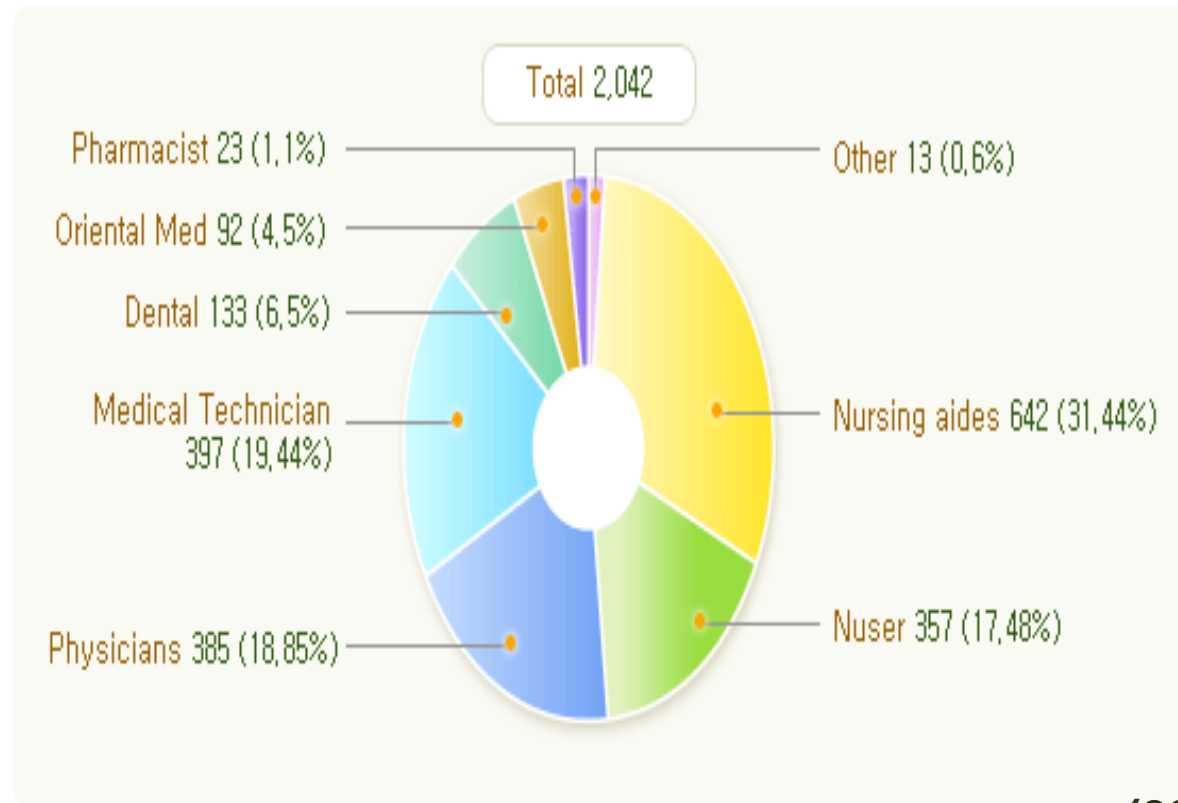


Health



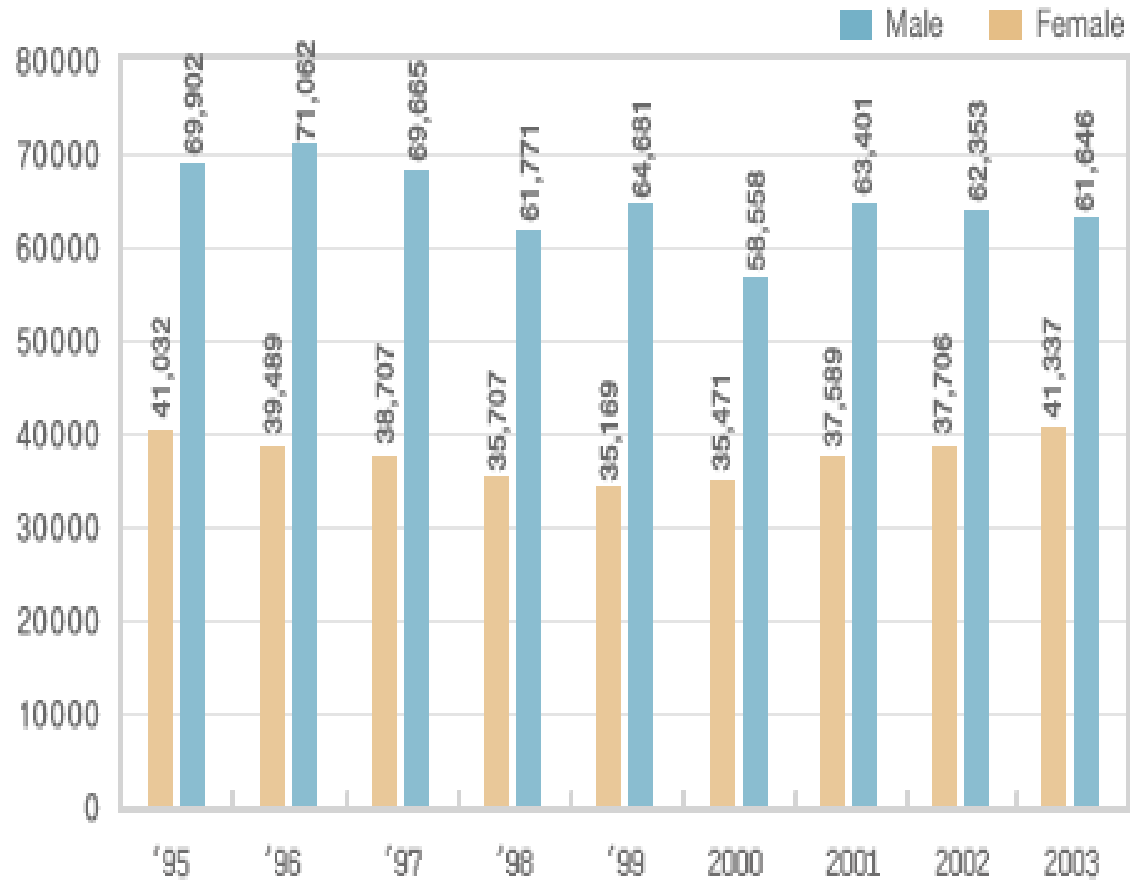
(2005)

Health



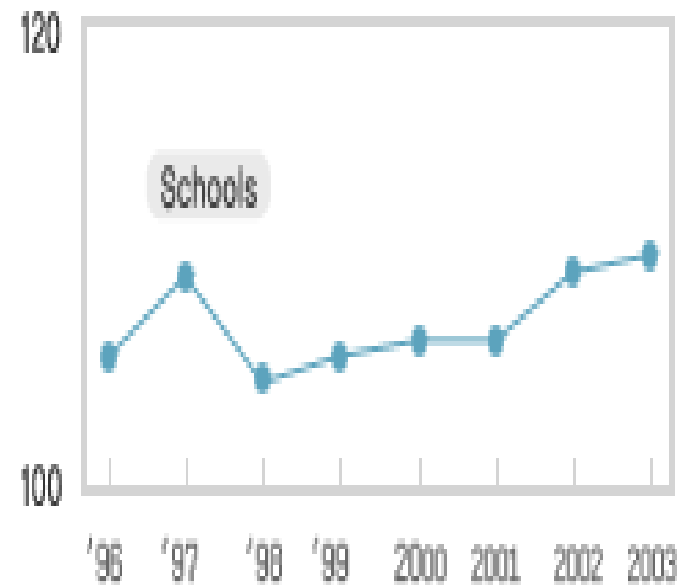
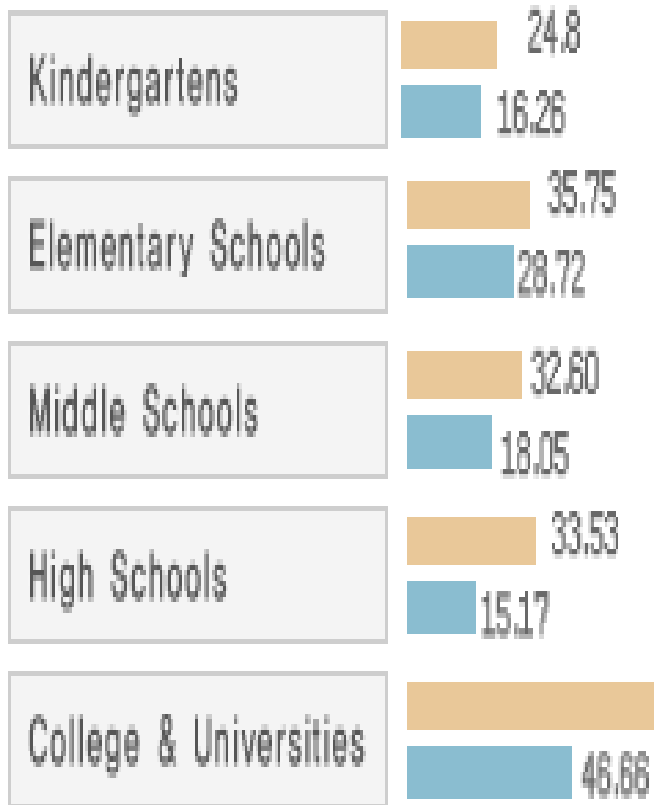
(2005)

Education



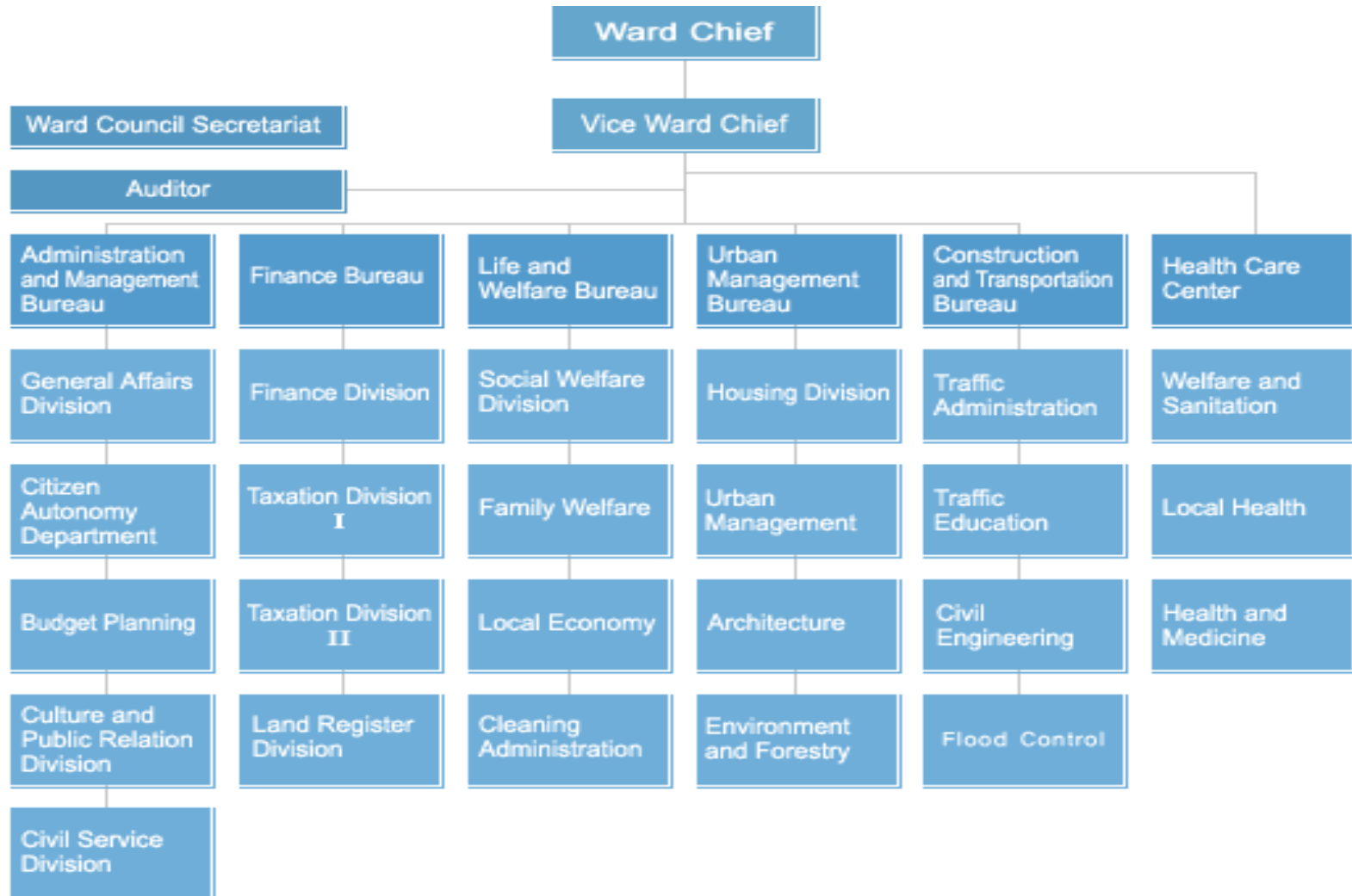
(2005)

Education



(2005)

Major Functions & Duties



Major Functions & Duties



Main Projects of Dongjak's Public Health Center

- ❖ Health promotion program
- ❖ Health management of low-income classes
- ❖ Management of chronic diseases
- ❖ Management of infectious diseases
- ❖ Home-visit elderly care program
- ❖ Program for pregnant women and children
- ❖ Program for CBR (community based rehabilitation)
- ❖ Public oral health project
- ❖ Patients care program
- ❖ Program of diagnosing at an early stage