

## Table of Contents

- Introduction
- History of Yongsan
- Symbols of Yongsan
- Regional Characteristic
- Total Area
- Climate
- Population (count)
- Change of Population 2003 ~ 2008
- Age distribution (%)
- Basic urban Infrastructure
- Information on main industries
- Organization Chart
- The Healthy city core team
- Number of medical organization
- Education
- **Recipients of the Basic Livelihood**
- Main Projects of Yongsan's Public Health Center

## Introduction




**Yongsan is rich in tradition, historical sites, natural attractions, and cultural treasures, such as the Tongdosa**

**Temple, one of the three largest Buddhist temples in Korea, a pile of shells from the Iron Age, ancient tombs dating back to the Shilla Dynasty, the Naewonsa Temple, the traditional Gaya dynasty festival, and Mt. Yeongchuk, also called the second Mt. Geumgang.**

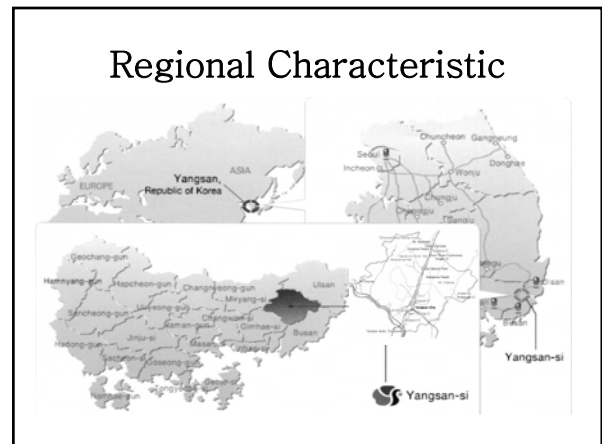
**To help to raise the competitiveness of the factories located in our industrial complex,**

- ## History of Yongsan
- **418 - Silla(King Munmu) - Samnyangju**
  - **665 - Goryeo(King Taejo) - Yangju**
  - **1414 - Joseon(King Taejong) - Yongsan-gun**
  - **1973 - Incorporated Donnae-gun(6 myeons)**
  - **1979 - Yongsan-myeon became Yongsan-eup, an upper jurisdiction level**
  - **1995 - 5 myeons in the eastern part incorporated into Busan**
  - **1996 - Became Yongsan-si(city) and 3 dong were established in Yongsan-eup**
  - **2007 - Ungsang branch office established. 4 dong will be established under Ungsang-eup (To be implemented)**

## Symbols of Yongsan

- The flag represents a desire to become a future city of 21st century based on the spirit of courteous and nice Yongsan people. It symbolizes people's strong will to Yongsan into an economical, social, and cultural hub of eastern part of Korea.
- White flowers bloom in mid April before the leaves sprout. The tree bears fruit in September and October. The soft flower symbolizes citizens' generosity, the green leaf, citizens' sufficiency, and the stem, citizens' solidarity.
- The tree bark splits into yellowish brown. The flower with four petals and sweet fragrance blooms in June. This tree is rare and a group of these trees in Sangbuk-myeon has been designated as Natural Monument No. 234. Its white flowers are very popular and they symbolize the pure and simple nature of Yongsan people.



## Characteristics of Region

Located in the southeastern Gyeongsangnam-do, Yangsan, which touches the Taebaek Mountains in the east, the Sobaek Mountains in the west, and the Jeongjok Mountains in the north, has famous temples such as Tongdosa Temple and Naeweonsa Temple

Which are located in the Gaji Mountain Provincial Park in Mt. yeongchuksan. It faces Busan Metropolitan City in the southeast, Ulsan Metropolitan City in the north, and miryang City and Gimhae City in the west. As for the traffic, Yangsan has many roads and railways, including the Seoul-Busan railroad in the west,

National Road No. 7 in the east, and the Seoul-Busan Highway and National Road No. 35 in the middle, which makes it a good transportation link between north and south, particularly between Busan and Ulsan.

## Characteristics of Region

Location	Address	Latitude	Longitude	Remarks
Yangsan City Hall	505, Nambu-dong	35-19-55	129- 2- 10	Rooftop of the City Hall
Southern end	1272, Gasan-ri, Dong-m	35-16-16	129-00-46	The end of Nakdong River
Northern end	San 1-1, Seon-ri, Weondong-myeon	35-31-44	129- 3- 19	Foothill of Mt. Shinbul
Eastern end	San 66, Yongdang-ri, Un	35-28-30	129-07-57	Upper position of Mt. Daeun
Western end	1561 Yongdang-ri, Ungs	35-22-45	128-52-18	Middle of Nakdong River.

## Total Area

Class	Total	A rice field	An upland field	A forest land	Residential area	Industrial area	The others
Total	484.44	13.31	40.56	363.07	11.78	6.61	49.11
Mulgeum-eup	19.61	1.35	7.72	4.64	1.34	0.02	4.54
Dong-Myeon	56.35	1.71	6.06	40.4	1.14	0.04	7
Wondong-Myeon	148.04	5.03	6.44	124.93	1.1	0.05	10.49
Sangbuk-Myeon	67.82	1.29	5.14	52.76	1.28	0.6	6.75
Habuk -Myeon	68.64	1.18	5.04	55.4	1.06	0.15	5.81
Jungang-Dong	13.78	0.65	0.88	7.93	1.68	0.02	2.62
Samsung-Dong	15.88	0.29	1.18	10.49	0.79	1.29	1.84
Gangseo-Dong	29.79	0.32	0.93	23.4	0.37	2.64	2.13
Seochang-Dong	22.01	0.27	2.48	15.61	1.34	0.22	2.09
Soju-Dong	18.45	0.68	2.72	11.1	0.61	1.19	2.15
Pyongsan-Dong	10.7	0.32	0.65	8.12	0.58	0.05	0.98
Deokgye-Dong	13.37	0.22	1.32	8.29	0.49	0.34	2.71

Source : Yangsan-si Statistical Data 2008

## Climate

### Temperature:

The lowest winter temperature in Yangsan City was 16.7°C below zero recorded in 1936, while the highest winter temperature was 6.6°C below zero in 1993. The highest summer temperature was 38.67°C in 1983, while the lowest summer temperature was 31.3°C in 1981.

### Humidity:

The humidity is low in winter and high in summer, reaching as high as 77% in August.

### Precipitation:

The city has relatively high precipitation due to the northeaster blowing from the eastern foothills of the Sobaek Mountains and experiences only mild snowfall, making it a very comfortable place to live in.

The first frost falls in the period from the end of October to the beginning of November and the first snow falls in the last ten days of December. However it snows only five times a year on the average.

## Climate

temperature(°C)		amount of precipitation (mm)	humidity (%)	sunshine time(h)	wind(㎞/h)	
average	the highest				average	The highest
15.1	35	1,796	68	1,741.2	2.3	14.7

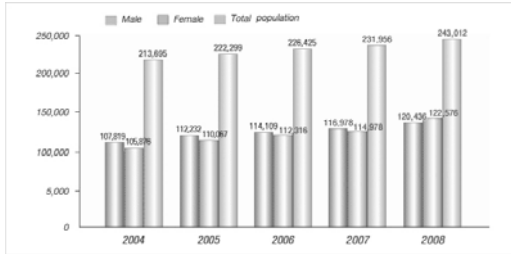
Source : Yangsan-si Statistical Data 2008

## Population & Households

	Households	Population			%
		Total	Male	Female	
Total	87,272	243,012	122,576	120,436	100
Mulgeum-eup	12,445	37,082	18,519	18,563	15.20
Dong-Myeon	4,568	12,633	6,449	6,184	5.20
Wondong-Myeon	1,866	3,896	1,940	1,956	1.60
Sangbuk-Myeon	5,709	15,486	7,907	7,579	6.40
Habuk -Myeon	4,176	10,085	5,182	4,903	4.20
Jungang-Dong	17,587	50,591	25,224	25,367	20.80
Samsung-Dong	8,721	23,995	12,334	11,661	9.90
Gangseo-Dong	3,180	8,718	4,476	4,242	3.60
Seochang-Dong	9,178	24,577	12,402	12,175	10.10
Soju-Dong	6,722	18,017	9,117	8,900	7.40
Pyongsan-Dong	8,673	25,471	12,743	12,728	10.50
Deokgye-Dong	4,447	12,461	6,283	6,178	5.10

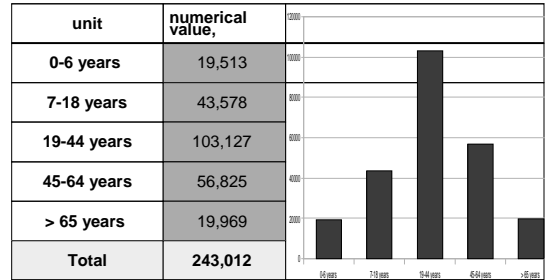
Source : Yangsan-si Statistical Data 2008

### Change of Population 2003 ~ 2008



Source : Yangsan-si Statistical Data 2008

### Age distribution (%)

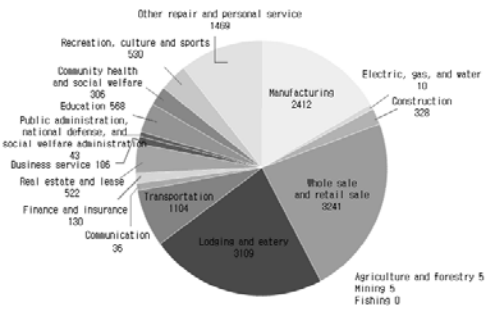


Source : Yangsan-si Statistical Data 2008

### Basic urban Infrastructure

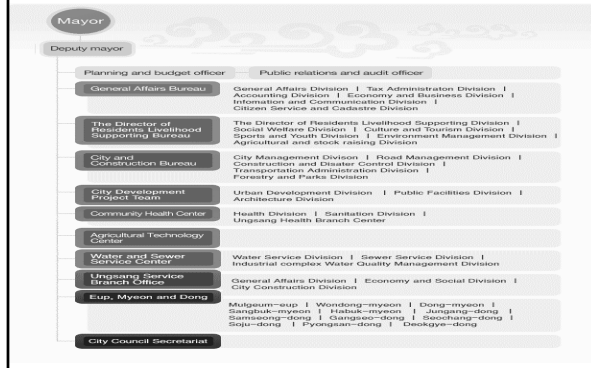
unit	numerical value	Source
Water supply (%)	82.3	Yangsan-si Statistical Data 2008
sewer system supply(%)	81.1	
Housing supply (%)	125.5	
Covered Roads (% Road of area)	57.5	
Lengths of roads (Km)	1130.6	
Park count	153.0	
Park Area ( km <sup>2</sup> )	6.1	

### Information on main industries

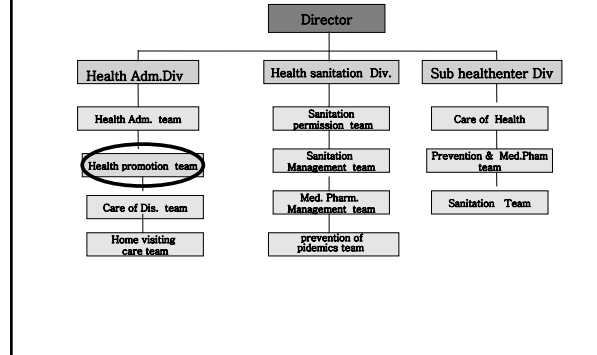


Source : Yangsan-si Statistical Data 2008

### Organization Chart



### The Healthy city core team



### Number of medical organization

Hospitals	13
Medical clinics	105
Drntal clinics	48
Oriental Medical clinics	44
Public health center	1
Sub - Public health center	6
Drugstore	95
Total	312

source : Yangsan-si Statistical Data 2008

### Education

unit	numerical value	Source
under elementary	32	Yangsan-si Statistical Data 2008
under middle school	14	
under high school	10	
over college	2	
Total	58	

### Recipients of the Basic Livelihood Protection Money (people living in poverty)

unit	numerical value	Source
Persons	6,008	Yangsan-si Statistical Data 2008
Households	3,276	

### Main Projects of Yangsan's Public Health Center

1. Health promotion program
2. Health management of low-income classes
3. Management of chronic diseases
4. Management of infectious diseases
5. Home-visit elderly care program
6. Program for pregnant women and children
7. Program for community based rehabilitation
8. Public oral health project
9. Patients care program
10. Program of diagnosing at an early stage